



Parts Manual

Mfg. No: 1687915-00
SXD19PWM82K, 82V Battery Electric 19"
Walk Mower Kit



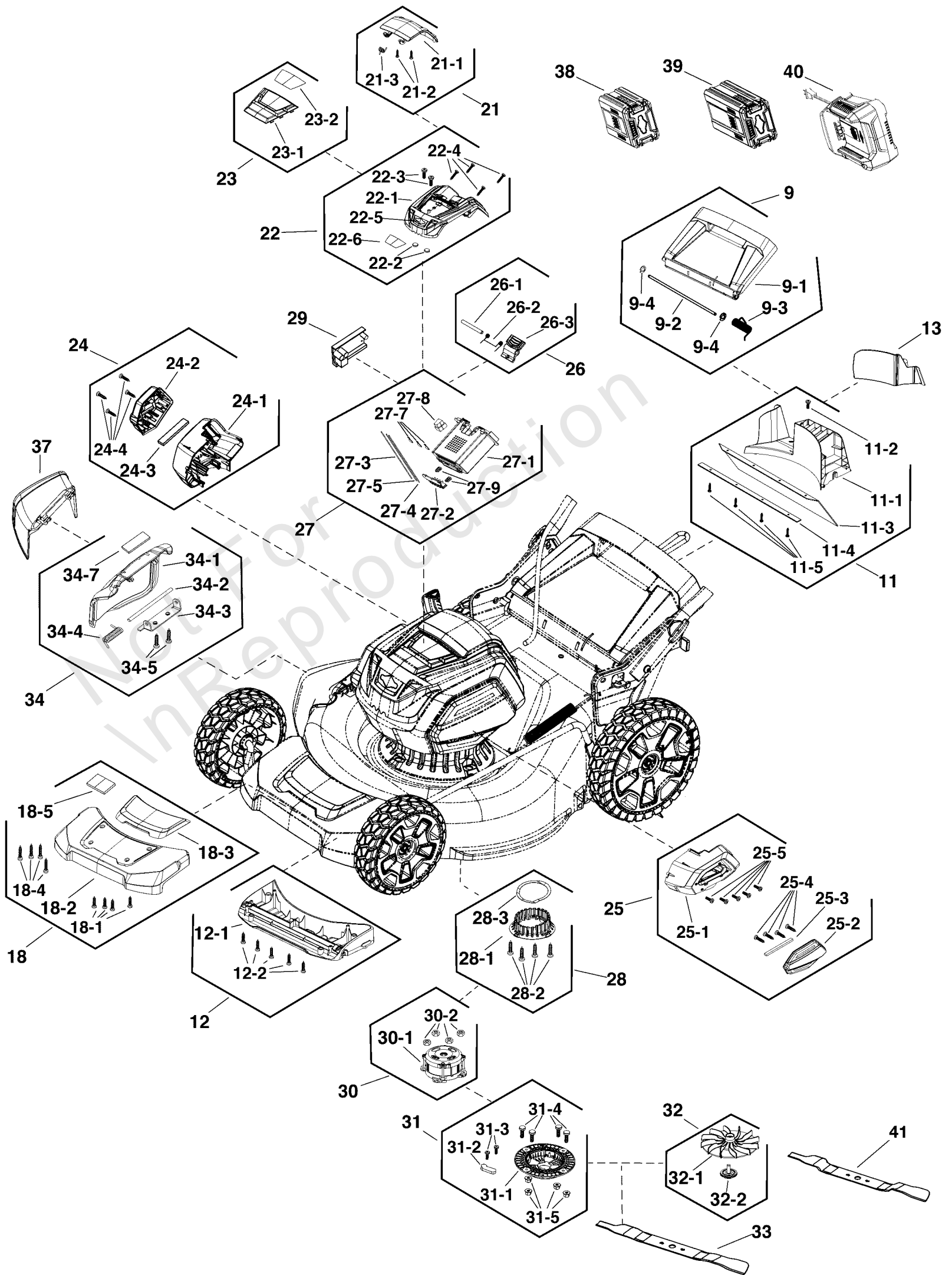
| Model Components | Page |
|---------------------------------|-------------|
| Battery & Cover Group..... | 4 |
| Handles Group..... | 8 |
| Wheels & Deck Group..... | 12 |
| Torque Specification Chart..... | 14 |

Not For
In Reproduction

Battery & Cover Group

Note: Unless noted otherwise, use the standard torque specifications

Mfg. No: 1687915-00



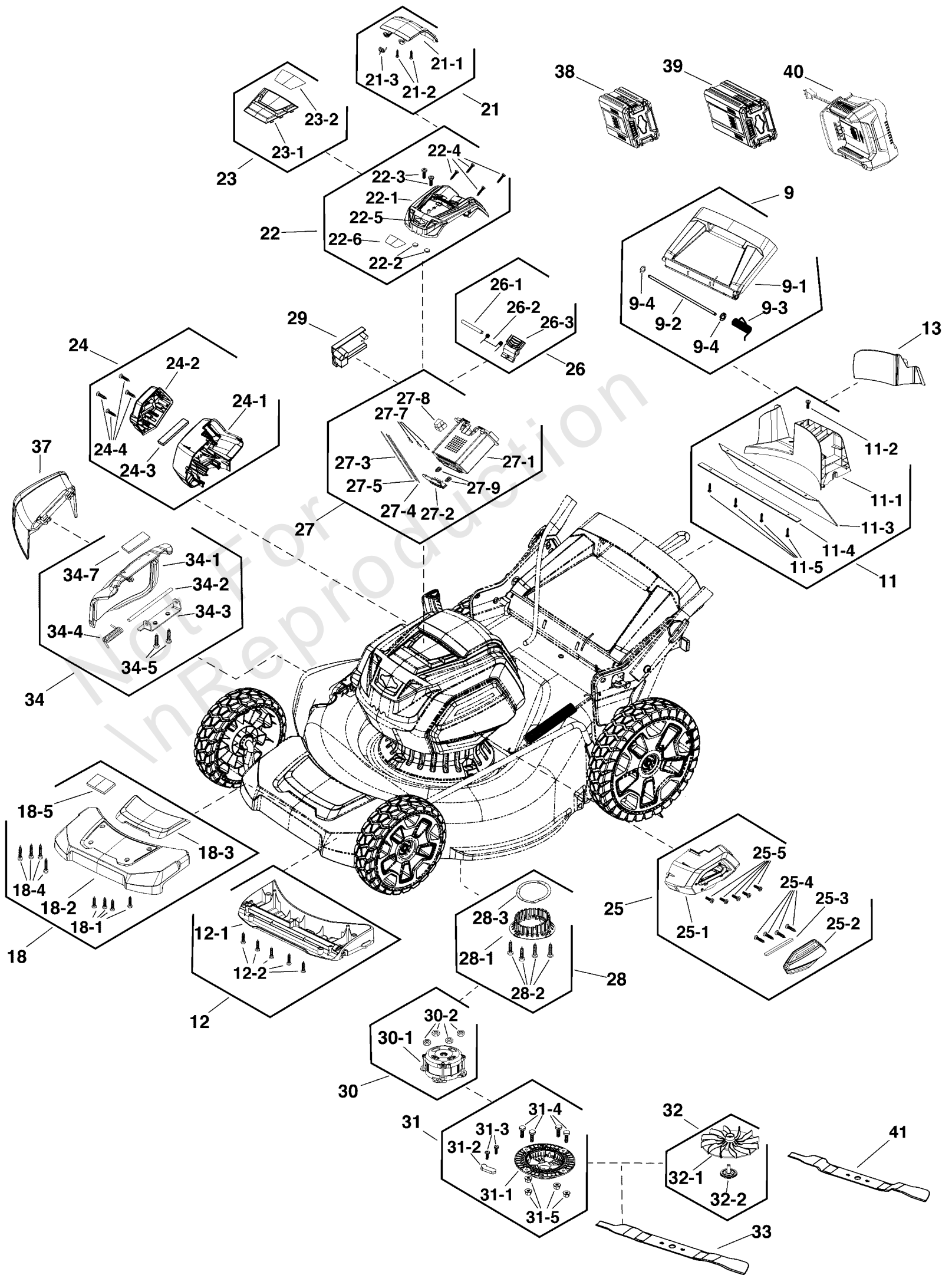
Battery & Cover Group

| REF NO | PART NO | QTY | DESCRIPTION |
|--------|---------|-----|--|
| 9 | 771427 | 1 | KIT, Rear Cover |
| 9-1 | ----- | 1 | REAR COVER |
| 9-2 | ----- | 1 | AXLE |
| 9-3 | ----- | 1 | SPRING |
| 9-4 | ----- | 2 | SPLIT WASHER |
| 9-5 | ----- | 1 | WARNING LABEL -(Not Shown) |
| 11 | 771429 | 1 | KIT, REAR BAFFLE |
| 11-1 | ----- | 1 | REAR BAFFLE |
| 11-2 | ----- | 1 | SCREW |
| 11-3 | ----- | 1 | COVER |
| 11-4 | ----- | 1 | PLATE |
| 11-5 | ----- | 4 | SCREW, Pan Torx Self Tap, ST4.2 x 20-C |
| 12 | 771430 | 1 | KIT, FRONT BULKHEAD |
| 12-1 | ----- | 1 | FRONT BAFFLE |
| 12-2 | ----- | 5 | SCREW |
| 13 | 771431 | 1 | MULCH PLUG |
| 18 | 771466 | 1 | KIT, FRONT PANEL |
| 18-1 | ----- | 4 | SCREW ST4.2-12 |
| 18-2 | ----- | 1 | BUMPER |
| 18-3 | ----- | 1 | BUMPER COVER |
| 18-4 | ----- | 4 | SCREW, Pan Torx Self Tap, ST4.2 x 20-C |
| 18-5 | ----- | 1 | LABEL |
| 21 | 771439 | 1 | KIT, Battery Cover |
| 21-1 | ----- | 1 | BATTERY DOOR |
| 21-2 | ----- | 2 | SCREW |
| 21-3 | ----- | 1 | SPRING |
| 22 | 771440 | 1 | KIT, Top Cover |
| 22-1 | ----- | 1 | TOP COVER |
| 22-2 | ----- | 2 | MAGNET |
| 22-3 | ----- | 2 | SCREW |
| 22-4 | ----- | 4 | SCREW, HexHead Self Tap, ST4.2 x 20-C |
| 22-5 | ----- | 1 | B&S LOGO |
| 22-6 | ----- | 1 | LABEL |
| 23 | 771468 | 1 | KIT, Cover |
| 23-1 | ----- | 1 | TOP COVER |
| 23-2 | ----- | 1 | SHROUD |
| 24 | 771442 | 1 | KIT, RIGHT COVER |
| 24-1 | ----- | 1 | RIGHT COVER |
| 24-2 | ----- | 1 | RIGHT DECORATIVE COVER |
| 24-3 | ----- | 1 | DUST SCREEN |
| 24-4 | ----- | 4 | SCREW |
| 25 | 771443 | 1 | KIT, Left Cover |
| 25-1 | ----- | 1 | LEFT COVER |
| 25-2 | ----- | 1 | LEFT DECORATIVE COVER |
| 25-3 | ----- | 1 | DUST SCRREN |
| 25-4 | ----- | 4 | SCREW |
| 25-5 | ----- | 5 | SCREW, HexHead Self Tap, ST4.2 x 20-C |
| 26 | 771444 | 1 | KIT, RELEASE BUTTON |
| 26-1 | ----- | 1 | PIN |
| 26-2 | ----- | 1 | SPRING |

Battery & Cover Group

Note: Unless noted otherwise, use the standard torque specifications

Mfg. No: 1687915-00



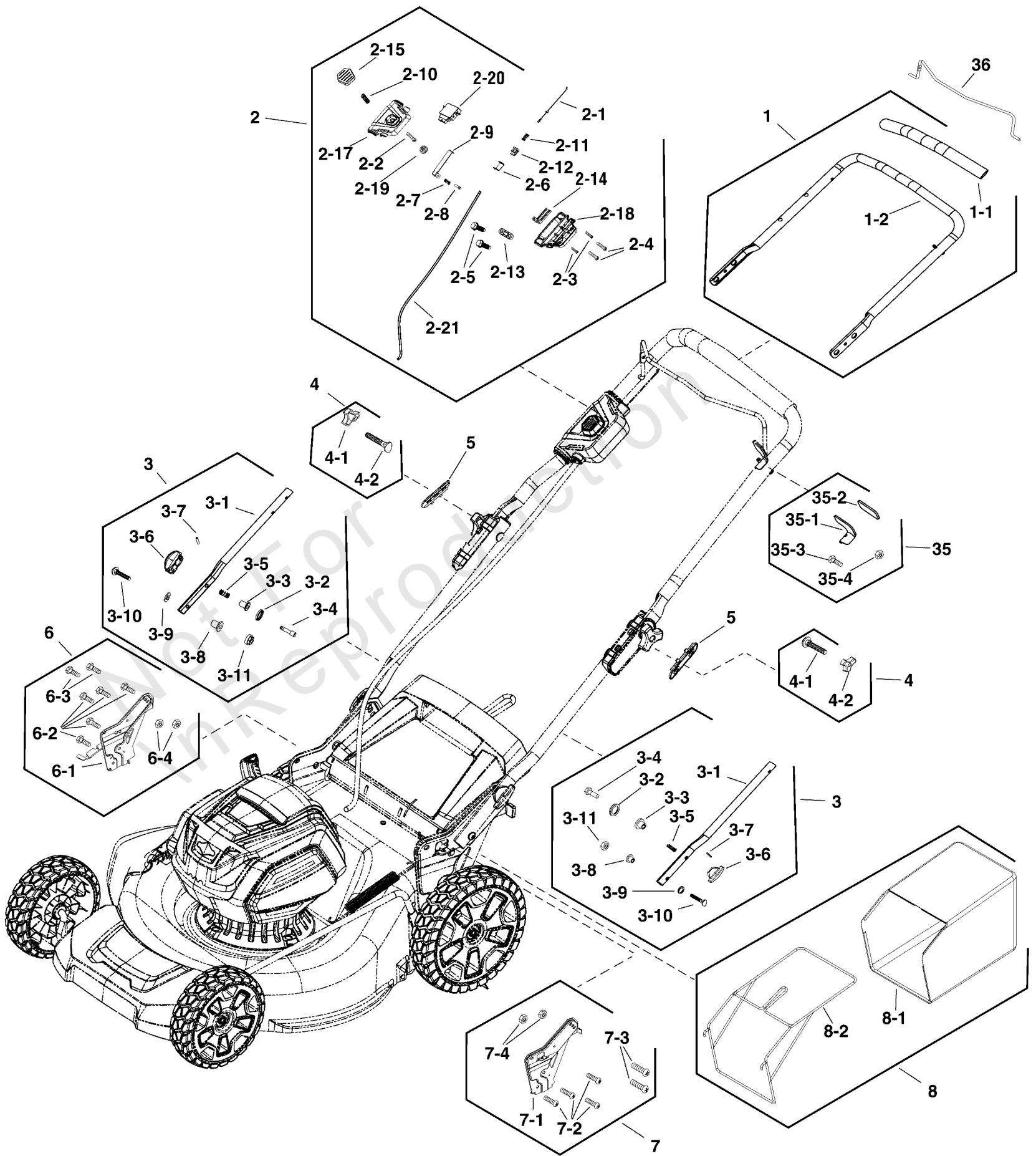
Battery & Cover Group

| REF NO | PART NO | QTY | DESCRIPTION |
|--------|----------|-----|---|
| 26-3 | ----- | 1 | BUTTON |
| 27 | 771445 | 1 | KIT, BATTERY COMPARTMENT |
| 27-1 | ----- | 1 | BATTERY HOUSING |
| 27-2 | ----- | 1 | BATTERY TERMINAL |
| 27-3 | ----- | 1 | WIRE |
| 27-4 | ----- | 1 | WIRE |
| 27-5 | ----- | 1 | WIRE |
| 27-7 | ----- | 3 | CONTACT |
| 27-8 | ----- | 1 | CONNECTOR |
| 27-9 | ----- | 2 | SPRING |
| 28 | 771446 | 1 | KIT, BASE |
| 28-1 | ----- | 1 | BASE |
| 28-2 | ----- | 4 | SCREW, HexHead Self Tap, ST4.2 x 20-C |
| 28-3 | ----- | 1 | SEAL |
| 29 | 771447 | 1 | KIT, PCB, NA |
| 30 | 771448 | 1 | KIT, MOTOR |
| 30-1 | ----- | 1 | MOTOR |
| 30-2 | ----- | 4 | NUT |
| 31 | 771449 | 1 | KIT, MOTOR BASE |
| 31-1 | ----- | 1 | MOTOR BASE |
| 31-2 | ----- | 1 | TENSION DISC |
| 31-3 | ----- | 2 | SCREW |
| 31-4 | ----- | 4 | BOLT |
| 31-5 | ----- | 4 | NUT |
| 32 | 771450 | 1 | KIT, Fan |
| 32-1 | ----- | 1 | FAN |
| 32-2 | 84003533 | 1 | KIT, Bolt |
| 33 | 771451 | 1 | KIT, Blade |
| 34 | 771452 | 1 | KIT, COVER, NA |
| 34-1 | ----- | 1 | SIDE DISCHARGE COVER |
| 34-2 | ----- | 1 | AXLE |
| 34-3 | ----- | 1 | BRACKET |
| 34-4 | ----- | 1 | SPRING, Torsion |
| 34-5 | ----- | 2 | BOLT |
| 34-7 | ----- | 1 | LABEL |
| 37 | 771455 | 1 | KIT, Deflector |
| 38 | 1760266 | 1 | * BATTERY, 2.0, 82V NA -(Optional) |
| 39 | 1760265 | 1 | * BATTERY, 4.0, 82V NA -(Optional) |
| 40 | 1760263 | 1 | * CHARGER, Battery, NA -(Optional) |
| 41 | 84004202 | 1 | BLADE, Mulching, 19" -(Optional) |
| -- | 770294 | 1 | REMOTE BELT FOR BATTERY -(Not Shown) |

Handles Group

Note: Unless noted otherwise, use the standard torque specifications

Mfg. No: 1687915-00



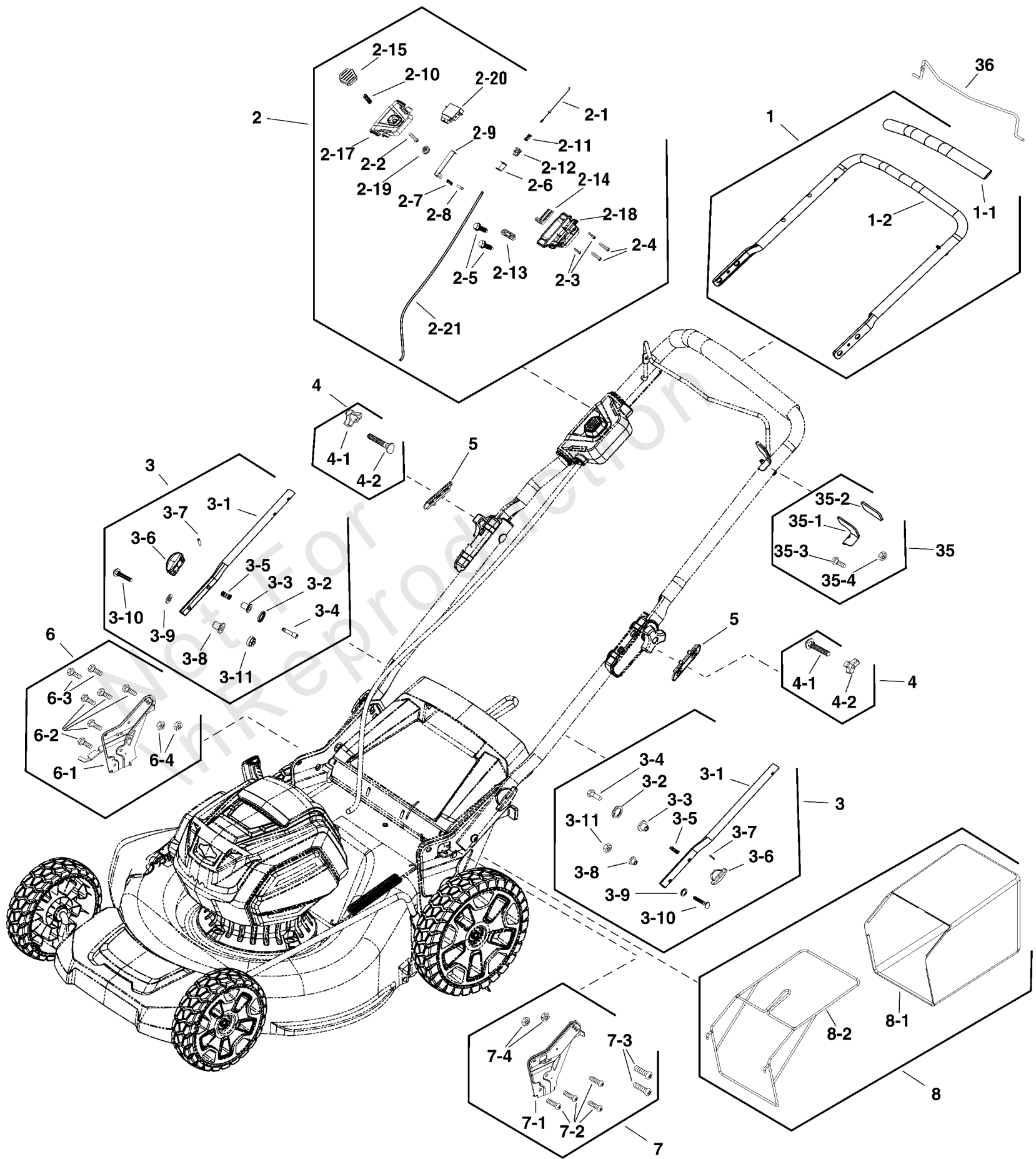
Handles Group

| REF NO | PART NO | QTY | DESCRIPTION |
|--------|----------|-----|--|
| 1 | 771419 | 1 | KIT, UPPER HANDLE, NA |
| 1-1 | ----- | 1 | SPONGE |
| 1-2 | ----- | 1 | UPPER HANDLE |
| 2 | 771420 | 1 | KIT, SWITCH BOX COMPONENT, NA |
| 2-1 | 84003402 | 1 | CABLE, Bail |
| 2-3 | ----- | 2 | SCREW |
| 2-4 | ----- | 2 | SCREW, Pan Torx Self Tap, ST4.2 x 20-C |
| 2-5 | ----- | 2 | SCREW ST4.2-16 |
| 2-6 | ----- | 1 | SLIDER |
| 2-7 | ----- | 1 | AXLE |
| 2-8 | ----- | 1 | SPRING |
| 2-9 | ----- | 1 | PLATE |
| 2-10 | ----- | 1 | SPRING |
| 2-11 | ----- | 1 | SPRING |
| 2-12 | ----- | 1 | SEAT |
| 2-13 | ----- | 1 | CLAMP |
| 2-14 | ----- | 1 | SLIDER |
| 2-15 | 84003403 | 1 | BUTTON, Start |
| 2-17 | ----- | 1 | SWITCH BOX COVER |
| 2-18 | ----- | 1 | SWITCH BOX COVER |
| 2-19 | ----- | 1 | COVER |
| 2-20 | 84003405 | 1 | SWITCH |
| 2-21 | ----- | 1 | POWER LINE |
| 3 | 771458 | 1 | KIT, Lower Handle |
| 3-1 | ----- | 1 | LOWER HANDLE |
| 3-2 | ----- | 1 | GASKET |
| 3-3 | ----- | 1 | INSERT |
| 3-4 | ----- | 1 | POST |
| 3-5 | ----- | 1 | SPRING |
| 3-6 | ----- | 1 | KNOB |
| 3-7 | ----- | 1 | PIN |
| 3-8 | ----- | 1 | BLOCK |
| 3-9 | ----- | 1 | WASHER, Flat |
| 3-10 | ----- | 1 | BOLT |
| 3-11 | ----- | 1 | NUT |
| 4 | 771422 | 1 | KIT, HARDWARE |
| 4-1 | ----- | 1 | KNOB, M8 |
| 4-2 | ----- | 1 | BOLT |
| 5 | 771423 | 1 | KIT, SLEEVE |
| 6 | 771424 | 1 | KIT, RIGHT BRACKET |
| 6-1 | ----- | 1 | HEIGHT ADJUST, RIGHT |
| 6-2 | ----- | 5 | SCREW |
| 6-3 | ----- | 2 | BOLT |
| 6-4 | ----- | 2 | NUT |
| 7 | 771425 | 1 | KIT, LEFT BRACKET |
| 7-1 | ----- | 1 | HEIGHT ADJUST, LEFT |
| 7-2 | ----- | 4 | SCREW |
| 7-3 | ----- | 2 | BOLT |
| 7-4 | ----- | 2 | NUT |
| 8 | 771426 | 1 | KIT, GRASS BAGGER |
| 8-1 | ----- | 1 | BAG, Grass Catcher |

Handles Group

Note: Unless noted otherwise, use the standard torque specifications

Mfg. No: 1687915-00



Handles Group

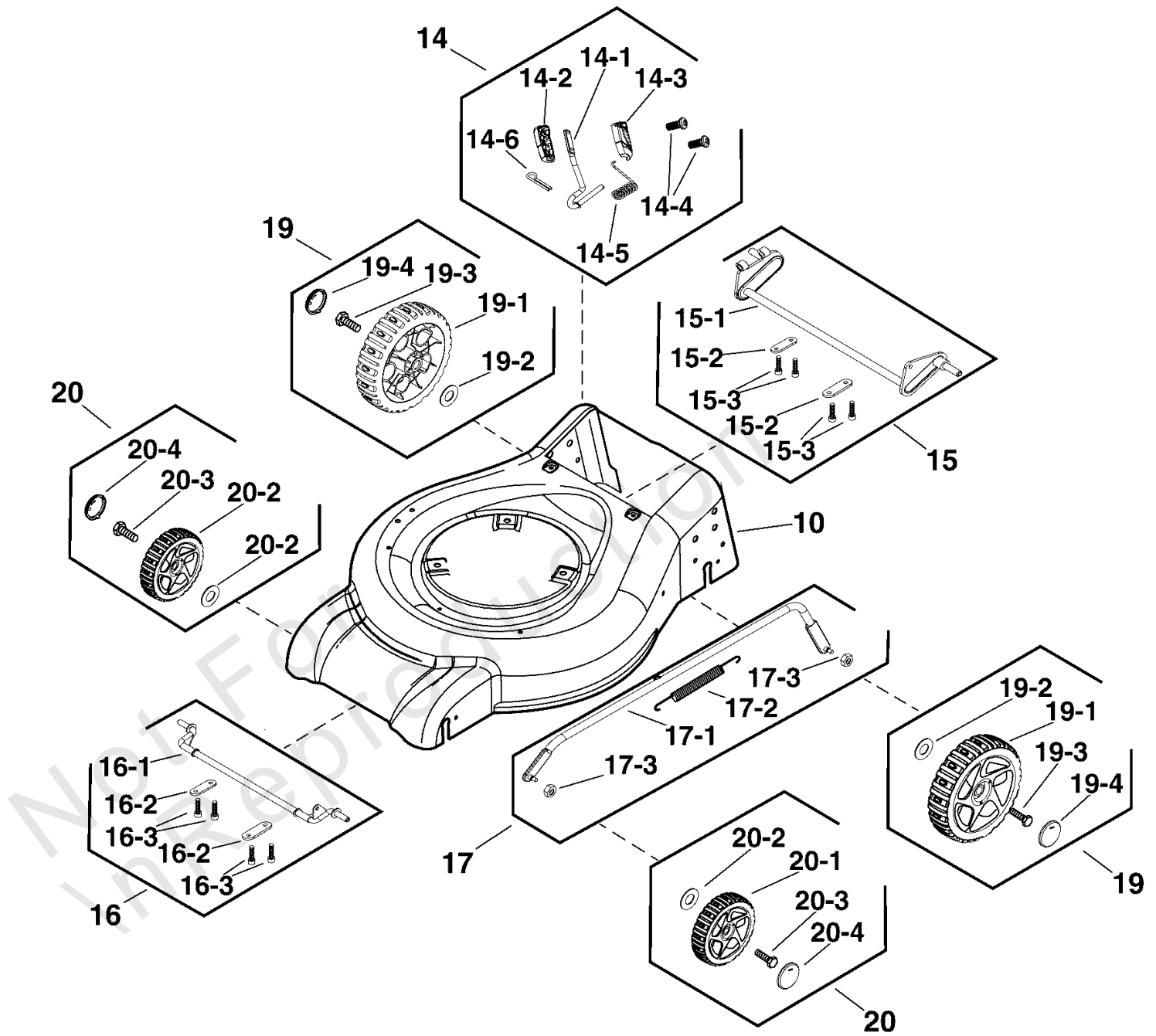
| REF NO | PART NO | QTY | DESCRIPTION |
|--------|---------|-----|-------------|
| 8-2 | ----- | 1 | FRAME |
| 35 | 771453 | 1 | KIT, STOP |
| 35-1 | ----- | 1 | STOP |
| 35-2 | ----- | 1 | SPONGE |
| 35-3 | ----- | 1 | BOLT |
| 35-4 | ----- | 1 | NUT |
| 36 | 771454 | 1 | KIT, LEVER |

Not For In Reproduction

Wheels & Deck Group

Note: Unless noted otherwise, use the standard torque specifications

Mfg. No: 1687915-00



Wheels & Deck Group

| REF NO | PART NO | QTY | DESCRIPTION |
|--------|---------|-----|--|
| 10 | 771428 | 1 | MOWER DECK |
| 14 | 771432 | 1 | KIT, HEIGHT ADJUST HANDLE |
| 14-1 | ----- | 1 | HEIGHT ADJUSTMENT BAR |
| 14-2 | ----- | 1 | HOUSING, Left |
| 14-3 | ----- | 1 | HOUSING, Right |
| 14-4 | ----- | 2 | SCREW |
| 14-5 | ----- | 1 | SPRING |
| 14-6 | ----- | 1 | PIN, COTTER |
| 15 | 771433 | 1 | KIT, REAR AXLE |
| 15-1 | ----- | 1 | REAR AXLE |
| 15-2 | ----- | 2 | TAB |
| 15-3 | ----- | 4 | SCREW, Pan Torx Self Tap, ST4.2 x 20-C |
| 16 | 771434 | 1 | KIT, FRONT AXLE |
| 16-1 | ----- | 1 | FRONT AXLE |
| 16-2 | ----- | 2 | TAB |
| 16-3 | ----- | 4 | SCREW, Pan Torx Self Tap, ST4.2 x 20-C |
| 17 | 771435 | 1 | KIT, HEIGHT ADJUST ROD |
| 17-1 | ----- | 1 | HEIGHT ADJUSTMENT |
| 17-2 | ----- | 1 | SPRING |
| 17-3 | ----- | 2 | NUT |
| 19 | 770187 | 2 | KIT, Wheel, 10", NA & EU |
| 19-1 | ----- | 1 | WHEEL |
| 19-2 | ----- | 1 | WASHER |
| 19-3 | ----- | 1 | BOLT |
| 19-4 | ----- | 1 | COVER, Wheel |
| 20 | 770188 | 2 | KIT, Wheel, 8" |
| 20-1 | ----- | 1 | WHEEL, 8" |
| 20-2 | ----- | 1 | WASHER |
| 20-3 | ----- | 1 | BOLT |
| 20-4 | ----- | 1 | COVER, Wheel |

Hardware Identification & Torque Specifications

| Torque Specification Chart | | | | | | | | |
|--|-----------|------|-----------|------|------------|------|------------|------|
| FOR STANDARD METRIC MACHINE HARDWARE (Tolerance ± 20%) | | | | | | | | |
| Property Class | 5.6 | | 8.8 | | 10.9 | | 12.9 | |
| | Class 5.6 | | Class 8.8 | | Class 10.9 | | Class 12.9 | |
| Size Of Hardware | in/lbs | Nm. | in/lbs | Nm. | in/lbs | Nm. | in/lbs | Nm. |
| | ft/lbs | | ft/lbs | | ft/lbs | | ft/lbs | |
| M3 | 5.88 | .56 | 13.44 | 1.28 | 19.2 | 1.80 | 22.92 | 2.15 |
| M4 | 13.44 | 1.28 | 30.72 | 2.90 | 43.44 | 4.10 | 52.56 | 4.95 |
| M5 | 26.4 | 2.50 | 60.96 | 5.75 | 5.97 | 8.10 | 7.15 | 9.7 |
| M6 | 44.64 | 4.3 | 7.3 | 9.9 | 10.3 | 14 | 12.1 | 16.5 |
| M7 | 5.2 | 7.1 | 12.1 | 16.5 | 16.9 | 23 | 19.9 | 27 |
| M8 | 7.7 | 10.5 | 17.7 | 24 | 25 | 34 | 29 | 40 |
| M10 | 15 | 21 | 35 | 48 | 50 | 67 | 59 | 81 |
| M12 | 26 | 36 | 61 | 83 | 86.2 | 117 | 103 | 140 |
| M14 | 42 | 58 | 101 | 132 | 136 | 185 | 162 | 220 |
| M16 | 64 | 88 | 147 | 200 | 210 | 285 | 250 | 340 |
| M18 | 89 | 121 | 202 | 275 | 287 | 390 | 346 | 470 |
| M20 | 126 | 171 | 290 | 390 | 405 | 550 | 486 | 660 |
| M22 | 169 | 230 | 390 | 530 | 559 | 745 | 656 | 890 |
| M24 | 217 | 295 | 497 | 375 | 708 | 960 | 840 | 1140 |
| M27 | 320 | 435 | 733 | 995 | 1032 | 1400 | 1239 | 1680 |
| M30 | 435 | 590 | 995 | 1350 | 1401 | 1900 | 1681 | 2280 |
| M33 | 590 | 800 | 1349 | 1830 | 1902 | 2580 | 2278 | 3090 |
| M36 | 759 | 1030 | 1740 | 2360 | 2441 | 3310 | 2935 | 3980 |
| M39 | 988 | 1340 | 2249 | 3050 | 3163 | 4290 | 3798 | 5150 |

| Torque Specification Chart | | | | | | |
|---|-------------|-------|-------------|-------|-------------|---------|
| FOR STANDARD MACHINE HARDWARE (Tolerance ± 20%) | | | | | | |
| Hardware Grade | No Marks | | SAE Grade 5 | | SAE Grade 8 | |
| | SAE Grade 2 | | SAE Grade 5 | | SAE Grade 8 | |
| Size Of Hardware | in/lbs | Nm. | in/lbs | Nm. | in/lbs | Nm. |
| | ft/lbs | | ft/lbs | | ft/lbs | |
| 8-32 | 19 | 2.1 | 30 | 3.4 | 41 | 4.6 |
| 8-36 | 20 | 2.3 | 31 | 3.5 | 43 | 4.9 |
| 10-24 | 27 | 3.1 | 43 | 4.9 | 60 | 6.8 |
| 10-32 | 31 | 3.5 | 49 | 5.5 | 68 | 7.7 |
| 1/4-20 | 66 | 7.6 | 8 | 10.9 | 12 | 16.3 |
| 1/4-28 | 76 | 8.6 | 10 | 13.6 | 14 | 19.0 |
| 5/16-18 | 11 | 15.0 | 17 | 23.1 | 25 | 34.0 |
| 5/16-24 | 12 | 16.3 | 19 | 25.8 | 29 | 34.0 |
| 3/8-16 | 20 | 27.2 | 30 | 40.8 | 45 | 61.2 |
| 3/8-24 | 23 | 31.3 | 35 | 47.6 | 50 | 68.0 |
| 7/16-14 | 30 | 40.8 | 50 | 68.0 | 70 | 95.2 |
| 7/16-20 | 35 | 47.6 | 55 | 74.8 | 80 | 108.8 |
| 1/2-13 | 50 | 68.0 | 75 | 102.0 | 110 | 149.6 |
| 1/2-20 | 55 | 74.8 | 90 | 122.4 | 120 | 163.2 |
| 9/16-12 | 65 | 88.4 | 110 | 149.6 | 150 | 204.0 |
| 9/16-18 | 75 | 102.0 | 120 | 163.2 | 170 | 231.2 |
| 5/8-11 | 90 | 122.4 | 150 | 204.0 | 220 | 299.2 |
| 5/8-18 | 100 | 136 | 180 | 244.8 | 240 | 326.4 |
| 3/4-10 | 160 | 217.6 | 260 | 353.6 | 386 | 525.0 |
| 3/4-16 | 180 | 244.8 | 300 | 408.0 | 420 | 571.2 |
| 7/8-9 | 140 | 190.4 | 400 | 544.0 | 600 | 816.0 |
| 7/8-14 | 155 | 210.8 | 440 | 598.4 | 660 | 897.6 |
| 1-8 | 220 | 299.2 | 580 | 788.8 | 900 | 1,244.0 |
| 1-12 | 240 | 326.4 | 640 | 870.4 | 1,000 | 1,360.0 |

The guides and ruler furnished below are designed to help you select the appropriate hardware.



Nut, M8

Thread Diameter (mm)

Inside Diameter (in) Threads per inch

Nut, 1/2-16



Screw, M8- 1.25 x 25

Thread Diameter (mm) Distance between threads (mm) Body Length (mm)

Body Diameter Threads per inch Body Length (in)

Screw, 1/2- 16 x 2



Standard Hardware Sizing

When a washer or nut is identified as 1/2" (M8), this is the *Nominal size*, meaning the *inside diameter* is 1/2 inch (8mm metric thread diameter); if a second number is present it represents the *threads per inch* (distance between threads).

When bolt or capscrew is identified as 1/2 - 16 x 2" (M8 - 1.25 x 50), this means the *Nominal size*, or body diameter is 1/2 inch (8mm metric thread diameter), the second number, 16, represents the *threads per inch*, (*distance between threads*). The final number is the body length of the bolt or screw, 2 inches (50mm).

NOTES

- These torque values are to be used for all hardware excluding: locknuts, self-tapping screws, thread forming screws, sheet metal screws and socket head setscrews.
- Recommended seating torque values for locknuts:
 - for prevailing torque locknuts - use 65% of grade 5 torques.
 - for flange whizlock nuts and screws - use 135% of grade 5 torques.
- Unless otherwise noted on assembly drawings, all torque values must meet this specification.

Common Hardware Types

Hex Head Capscrew



Washer



Carriage Bolt



Hex Nut

Wrench & Fastener Size Guide

| | | | | |
|----------------------------------|----------------------------------|----------------------------------|--|---------------------------------|
| | | | | |
| 1/4" Bolt or Nut Wrench—7/16" | 5/16" Bolt or Nut Wrench—1/2" | 3/8" Bolt or Nut Wrench—9/16" | 7/16" Bolt or Nut Wrench (Bolt)—5/8" Wrench (Nut)—11/16" | 1/2" Bolt or Nut Wrench—3/4" |
| M6 Bolt or Nut Wrench—10mm | M8 Bolt or Nut Wrench—13mm | M10 Bolt or Nut Wrench—17mm | M12 Bolt or Nut Wrench—19mm | M14 Bolt or Nut Wrench—22mm |

