

Parts Manual

Mfg. No: 1696462-00
Catcher, Clean Sweep Triple, 46", 48" &

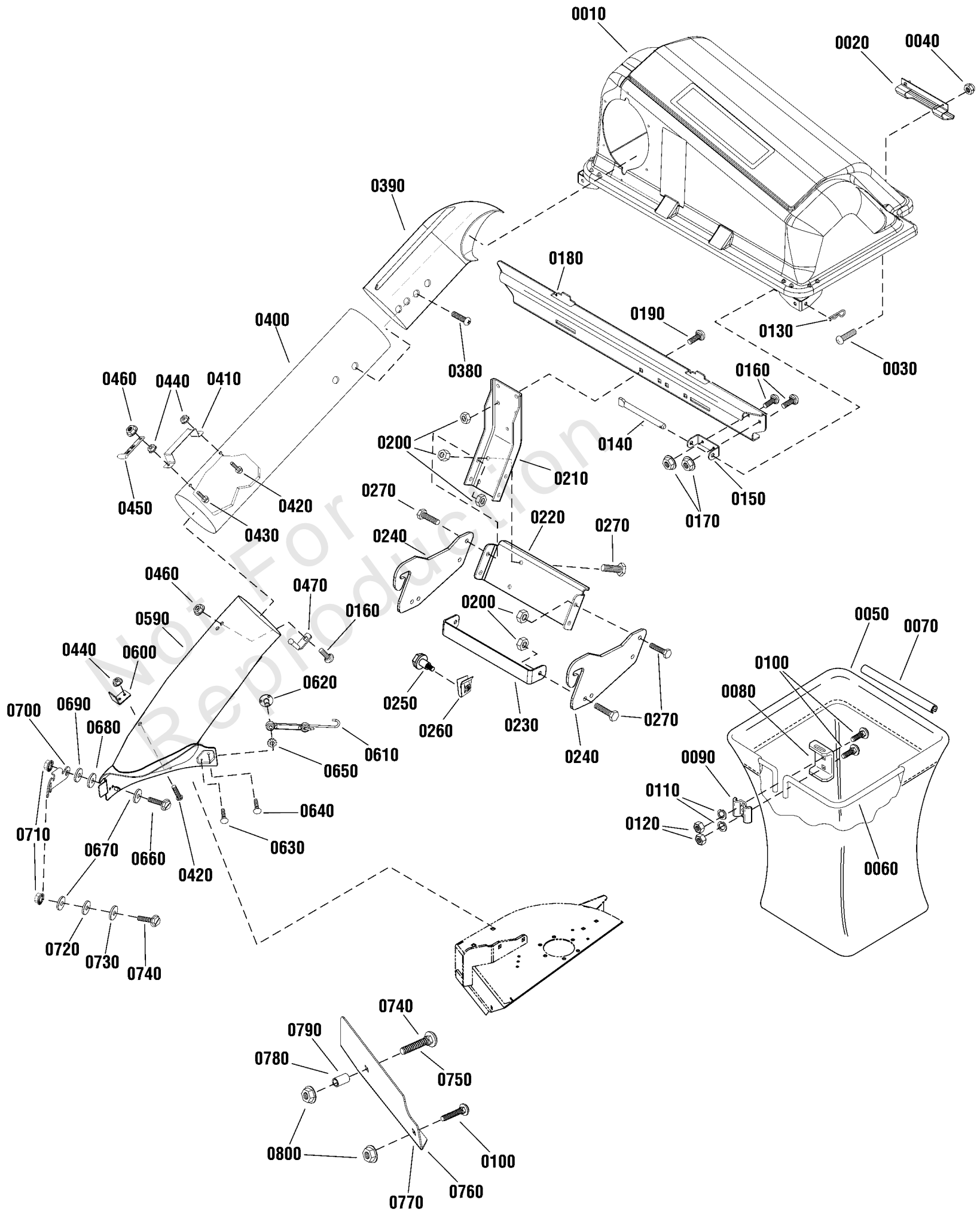
Model Components	Page
Triple Catcher Assembly.....	4
Torque Specification Chart.....	8

Not For
Reproduction

Triple Catcher Assembly

Note: Unless noted otherwise, use the standard torque specifications

Mfg. No: 1696462-00



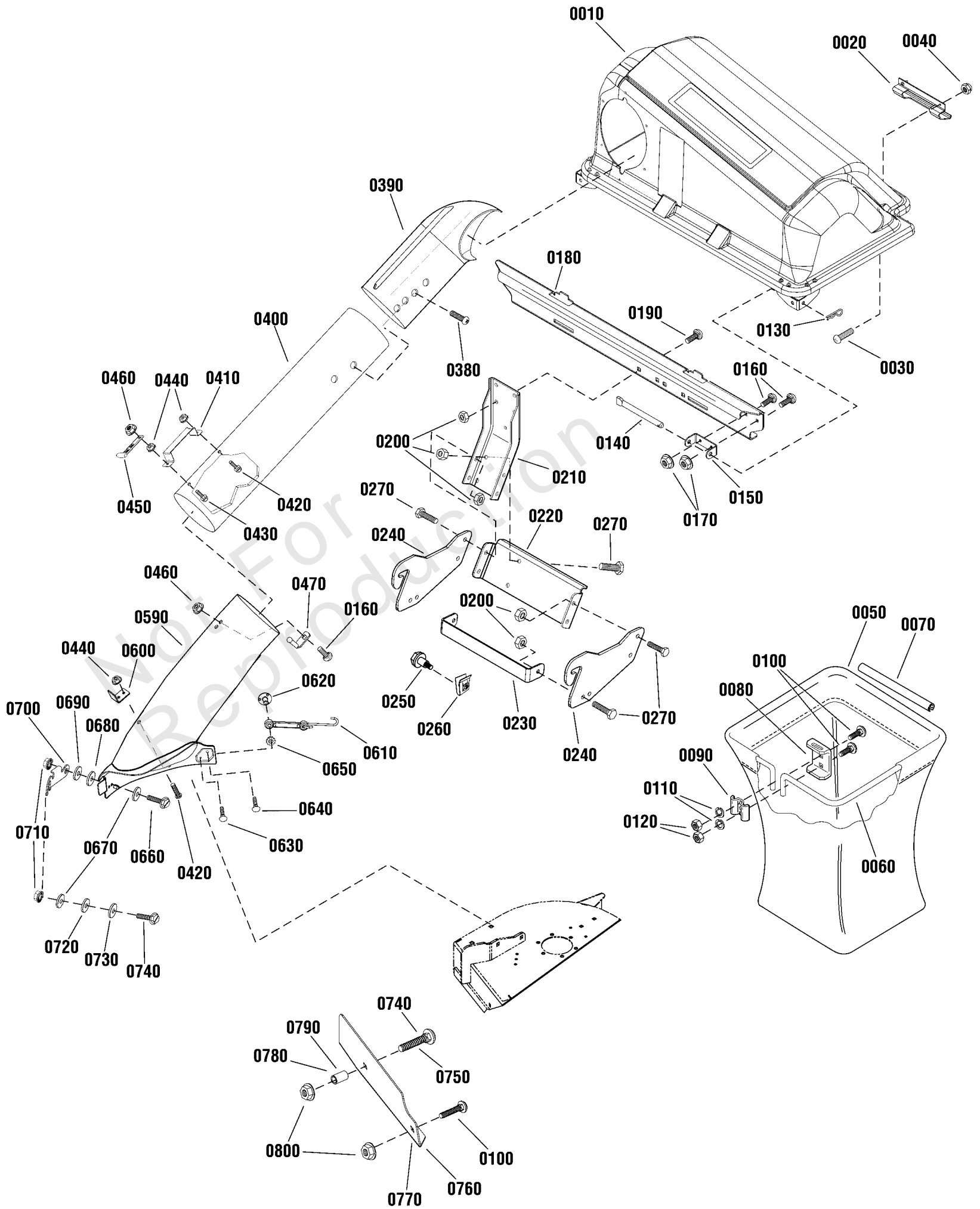
Triple Catcher Assembly

REF NO	PART NO	QTY	DESCRIPTION
0010	1736101YP	1	ASSEMBLY, Cover & Screen, Triple Catcher
0020	054537MA	2	HANDLE, Plastic
0030	1960404SM	4	SCREW, Truss Head Phillips, 10-24 x 3/4
0040	1933896SM	4	NUT, Hex Lock, 10-24 w/Nylon Insert
0050	1733695SM	3	BAG, Triple Regular
0060	1733517SM	3	HOOP, Triple
0070	1733709SM	3	EDGING, Tube Grass Bag
0080	1703807ASM	3	HANGER, Grass Bag
0090	1672023ASM	3	CLAMP, Grass Bag Plain
0100	1931333SM	7	BOLT, Carriage, 5/16-18 x 3/4, G5
0110	1917356SM	6	LOCKWASHER, Spring, 5/16
0120	1917372SM	6	NUT, Hex, 5/16-18
0130	1918196SM	2	PIN, Quick, 1-7/8
0140	054407ZMA	2	PIN, Cover Hinge
0150	1736886AYP	2	PIVOT, Hinge
0160	1960252SM	5	BOLT, Carriage, 1/4-20 x 5/8
0170	1960294SM	4	NUT, Whiz-Lock, Hex-Flange, 1/4-20
0180	1736080AYP	1	CROSS SUPPORT
0190	1931350SM	4	BOLT, Carriage, 3/8-16 X 1, G5
0200	1928352SM	12	NUT, Hex Whiz Lock Flange, 3/8-16
0210	1707526ASM	1	SUPPORT, Upright
0220	1736028AYP	1	BRACKET, Upright
0230	1736030AYP	1	BRACKET, Hitch
0240	1736029AYP	2	PLATE, Bagger Mount
0250	1728976SM	2	BOLT, Shoulder, 5/16-18 x 1-5/8
0260	1960717SM	2	NUT, Speed, 5/16-18
0270	1920415SM	8	CAPSCREW, Hex-Head, 3/8-16 X 1-1/4, G5
0380	26X239MA	1	SCREW, 1/4 X 3/4
0390	1733885SM	1	ELBOW, Upper Tube Poly
0400	1734299SM	1	TUBE, Clear Poly
0410	054416ZMA	1	HANDLE, Connect Tube
0420	004X24MA	1	SCREW, 1/4-20 x 1/2
0430	004X71MA	1	SCREW, 1/4-20 x 1
0440	1928372SM	4	NUT, Hex Keps, 1/4-20
0450	2171600SM	1	STRAP, Hood
0460	1930642SM	2	NUT, Hex Flange Top-Lock, 1/4-20
0470	054563MA	1	PIN, Latch
0590	1734776YP	1	BOOT, Bagging
0600	1737764AYP	1	UPSTOP, Deflector
0610	7036433SM	1	STRAP, Mounting Bag
0620	7036404SM	1	NUT, Weld, 10-24
0630	7036415SM	1	SCREW, Pan Head, 10 x 5/8
0640	1931320SM	1	BOLT, Carriage, 1/4-20 X 3/4
0650	1960685SM	1	NUT, Hex, KEPS, Conical, 1/4-20
0660	1921333SM	1	CAPSCREW, Hex Head, 5/16-18 x 1
0670	1960044SM	2	WASHER, 5/16 x 3/4
0680	1708511SM	1	SPACER, 1" O.D.
0690	7026257MA	1	Washer, Wave
0700	1737765AYP	1	LATCH, Bagging Boot
0710	1960686SM	2	NUT, Hex Flange 5/16-18
0720	1723244SM	1	SPACER, Hydraulic Lift

Triple Catcher Assembly

Note: Unless noted otherwise, use the standard torque specifications

Mfg. No: 1696462-00



Triple Catcher Assembly

REF NO	PART NO	QTY	DESCRIPTION
0730	1719381SM	1	WASHER, 11/32 x 1
0740	1960223SM	2	BOLT, Carriage, 5/16-18 x 1 1/4 -(52" Decks Only)
0750	1931339SM	1	BOLT, Round Head, Square Neck 5/16-18 x 2 -(46" Decks Only)
0760	1737241AYP	1	BAFFLE, 46" Mower Deck -(46" Decks Only)
0770	1737242AYP	1	BAFFLE, 52" Mower Deck -(52" Decks Only)
0780	1676088SM	1	SPACER, 5/8 x .320 -(46" Decks Only)
0790	1674440SM	1	SPACER, 3/8 x 5/8 -(52" Decks Only)
0800	1927557SM	2	NUT, Hex Whiz Lock Flange, 5/16-18

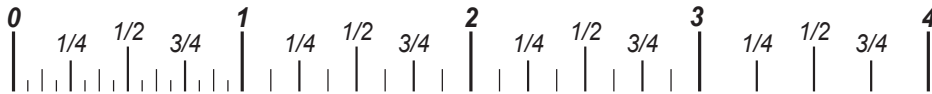
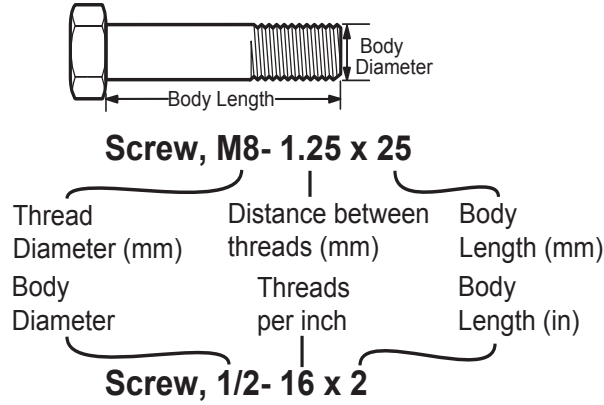
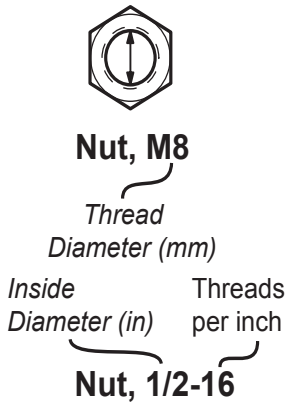
Not For
Reproduction

Hardware Identification & Torque Specifications

Torque Specification Chart								
FOR STANDARD METRIC MACHINE HARDWARE (Tolerance ± 20%)								
Property Class	5.6		8.8		10.9		12.9	
	Class 5.6		Class 8.8		Class 10.9		Class 12.9	
Size Of Hardware	in/lbs	Nm.	in/lbs	Nm.	in/lbs	Nm.	in/lbs	Nm.
	ft/lbs		ft/lbs		ft/lbs		ft/lbs	
M3	5.88	.56	13.44	1.28	19.2	1.80	22.92	2.15
M4	13.44	1.28	30.72	2.90	43.44	4.10	52.56	4.95
M5	26.4	2.50	60.96	5.75	5.97	8.10	7.15	9.7
M6	44.64	4.3	7.3	9.9	10.3	14	12.1	16.5
M7	5.2	7.1	12.1	16.5	16.9	23	19.9	27
M8	7.7	10.5	17.7	24	25	34	29	40
M10	15	21	35	48	50	67	59	81
M12	26	36	61	83	86.2	117	103	140
M14	42	58	101	132	136	185	162	220
M16	64	88	147	200	210	285	250	340
M18	89	121	202	275	287	390	346	470
M20	126	171	290	390	405	550	486	660
M22	169	230	390	530	559	745	656	890
M24	217	295	497	375	708	960	840	1140
M27	320	435	733	995	1032	1400	1239	1680
M30	435	590	995	1350	1401	1900	1681	2280
M33	590	800	1349	1830	1902	2580	2278	3090
M36	759	1030	1740	2360	2441	3310	2935	3980
M39	988	1340	2249	3050	3163	4290	3798	5150

Torque Specification Chart						
FOR STANDARD MACHINE HARDWARE (Tolerance ± 20%)						
Hardware Grade	No Marks		SAE Grade 5		SAE Grade 8	
	SAE Grade 2		SAE Grade 5		SAE Grade 8	
Size Of Hardware	in/lbs	Nm.	in/lbs	Nm.	in/lbs	Nm.
	ft/lbs		ft/lbs		ft/lbs	
8-32	19	2.1	30	3.4	41	4.6
8-36	20	2.3	31	3.5	43	4.9
10-24	27	3.1	43	4.9	60	6.8
10-32	31	3.5	49	5.5	68	7.7
1/4-20	66	7.6	8	10.9	12	16.3
1/4-28	76	8.6	10	13.6	14	19.0
5/16-18	11	15.0	17	23.1	25	34.0
5/16-24	12	16.3	19	25.8	29	34.0
3/8-16	20	27.2	30	40.8	45	61.2
3/8-24	23	31.3	35	47.6	50	68.0
7/16-14	30	40.8	50	68.0	70	95.2
7/16-20	35	47.6	55	74.8	80	108.8
1/2-13	50	68.0	75	102.0	110	149.6
1/2-20	55	74.8	90	122.4	120	163.2
9/16-12	65	88.4	110	149.6	150	204.0
9/16-18	75	102.0	120	163.2	170	231.2
5/8-11	90	122.4	150	204.0	220	299.2
5/8-18	100	136	180	244.8	240	326.4
3/4-10	160	217.6	260	353.6	386	525.0
3/4-16	180	244.8	300	408.0	420	571.2
7/8-9	140	190.4	400	544.0	600	816.0
7/8-14	155	210.8	440	598.4	660	897.6
1-8	220	299.2	580	788.8	900	1,244.0
1-12	240	326.4	640	870.4	1,000	1,360.0

The guides and ruler furnished below are designed to help you select the appropriate hardware.



Standard Hardware Sizing

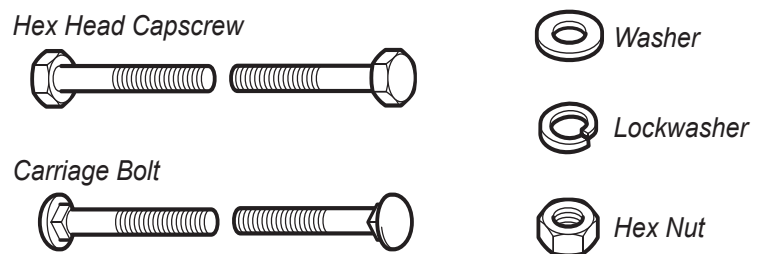
When a washer or nut is identified as 1/2" (M8), this is the *Nominal size*, meaning the *inside diameter* is 1/2 inch (8mm metric thread diameter); if a second number is present it represents the *threads per inch* (distance between threads).

When bolt or capscrew is identified as 1/2 - 16 x 2" (M8 - 1.25 x 50), this means the *Nominal size*, or body diameter is 1/2 inch (8mm metric thread diameter), the second number, 16, represents the *threads per inch*, (*distance between threads*). The final number is the body length of the bolt or screw, 2 inches (50mm).

NOTES

- These torque values are to be used for all hardware excluding: locknuts, self-tapping screws, thread forming screws, sheet metal screws and socket head setscrews.
- Recommended seating torque values for locknuts:
 - for prevailing torque locknuts - use 65% of grade 5 torques.
 - for flange whizlock nuts and screws - use 135% of grade 5 torques.
- Unless otherwise noted on assembly drawings, all torque values must meet this specification.

Common Hardware Types



Wrench & Fastener Size Guide

1/4" Bolt or Nut Wrench—7/16"	5/16" Bolt or Nut Wrench—1/2"	3/8" Bolt or Nut Wrench—9/16"	7/16" Bolt or Nut Wrench (Bolt)—5/8" Wrench (Nut)—11/16"	1/2" Bolt or Nut Wrench—3/4"
M6 Bolt or Nut Wrench—10mm	M8 Bolt or Nut Wrench—13mm	M10 Bolt or Nut Wrench—17mm	M12 Bolt or Nut Wrench—19mm	M14 Bolt or Nut Wrench—22mm

