

ILLUSTRATED PARTS LIST

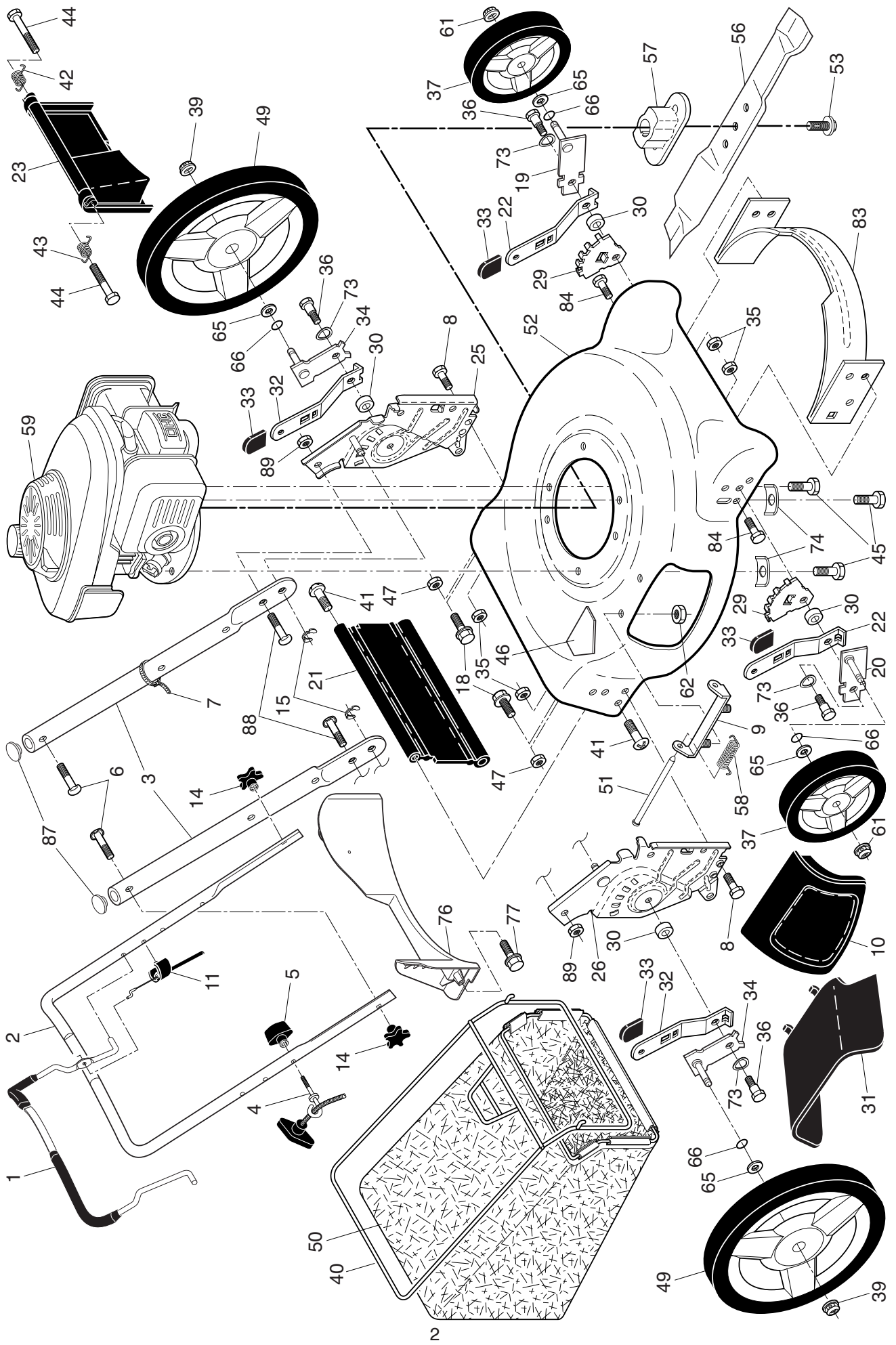


ROTARY LAWN MOWER

MODEL NUMBER 7021P

MFG. ID. NUMBER 96133003000

HUSQVARNA ROTARY LAWN MOWER -- MODEL NUMBER 7021P (MFG. ID. NUMBER 96133003000)



HUSQVARNA ROTARY LAWN MOWER -- MODEL NUMBER 7021P (MFG. ID. NUMBER 96133003000)

KEY NO.	PART NO.	DESCRIPTION	KEY NO.	PART NO.	DESCRIPTION
1	587 68 93-02	Control Bar, Molded	44	532 18 41-93	Bolt, Rear Door
2	585 85 48-03	Upper Handle	45	532 15 04-06	Screw, Hex Head, Threaded, Rolled 3/8-16 x 1
3	580 63 86-03	Bar, Lower Handle	46	532 40 47-63	Danger Decal
4	581 90 21-01	Rope Guide	47	532 75 11-53	Nut, Hex
5	581 91 26-01	T-Knob	49	588 26 86-02	Wheel & Tire Assembly, Rear 11 x 1-3/4
6	532 19 15-74	Handle Bolt	50	581 00 21-12	Grassbag
7	532 06 64-26	Wire Tie	51	532 14 72-86	Hinge Rod
8	874 78 05-12	Bolt, Hex Head 5/16-18 x 3/4	52	532 44 19-50	Kit, Housing (Includes Key Number 46)
9	532 15 41-32	Hinge Bracket	53	532 43 53-45	Screw, Machine, Flanged Hex Head, with Nylon Patch, Grade 8, 3/8-24 x 1-1/8
10	581 82 58-01	Mulcher Door	56	580 25 81-01	21" Blade
11	532 40 80-47	Engine Zone Control Cable	57	532 41 83-73	Blade Adapter
14	532 18 23-98	Handle Knob	58	532 15 21-24	Hinge Spring
15	812 00 00-32	Ring, Klip	59	- - -	Engine, Honda, Model Number GCV160-LAOS3B (For engine service and replacement parts, call Honda Engines at 1-800-426-7701)
18	817 60 04-06	Screw	61	532 40 91-48	Flanged Locknut
19	532 40 66-89	Axle Arm Assembly, Front, LH	62	873 80 04-00	Nut, Hex
20	532 40 66-90	Axle Arm Assembly, Front, RH	65	532 08 83-48	Washer, Flat
21	532 41 68-60	Rear Skirt	66	532 19 74-80	O-Ring
22	532 40 64-28	Selector Spring, Front	73	532 40 16-30	Washer, Curved, Cylindrical
23	581 42 56-01	Rear Door Assembly	74	532 12 50-78	Washer, Special, Engine
25	588 91 24-06	Handle Bracket, LH	76	532 41 05-89	Baffle, Rear
26	588 91 24-03	Handle Bracket, RH	77	817 41 13-12	Screw, Rear Baffle
29	532 41 05-94	Wheel Adjusting Bracket, Front	83	532 42 85-01	Baffle, Front
30	532 40 16-29	Spacer	84	817 00 05-10	Screw, Hex Head 5/8-16
31	532 18 55-95	Discharge Deflector	87	532 43 75-16	Plug, Handle Bar
32	532 44 15-59	Selector Spring, Rear	88	586 21 25-01	Bolt, Carriage
33	532 70 10-37	Selector Knob	89	873 97 05-00	Nut, Hex
34	588 91 26-02	Axle Arm Assembly, Rear	--	581 27 63-01	Bag of Parts
35	532 42 65-89	Locknut, Hex 5/16-18	--	(Includes Key Numbers 88 and 89)	
36	532 40 16-38	Shoulder Bolt 5/16-18	--	532 40 47-64	Warning Decal (not shown)
37	532 41 08-31	Wheel & Tire Assembly, Front 8 x 1-3/4	--	115 84 23-46	Operator's Manual, English / French
39	532 40 91-49	Nut, Hex	--	115 84 23-32	Operator's Manual, Spanish
40	532 41 19-49	Frame, Grassbag			
41	532 19 41-86	Screw, Hinge			
42	532 40 54-21	Spring, LH			
43	532 40 54-23	Spring, RH			

NOTE: All component dimensions given in U.S. inches. 1 inch = 25.4 mm

IMPORTANT: Use only Original Equipment Manufacturer (O.E.M.) replacement parts. Failure to do so could be hazardous, damage your lawn mower and void your warranty.