

**DIXIE CHOPPER®**

# XCALIBER

**MODELS:****3160** 31hp, 60" Deck**3360 EFI** 33hp, 60" Deck**3566** 35hp, 66" Deck**3574 EFI** 35hp, 74" Deck**3574** 35hp, 74" Deck**3674** 36hp, 74" Deck

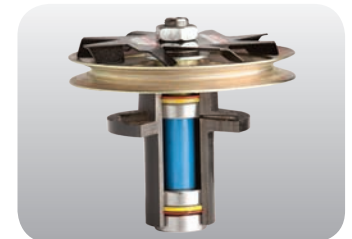
XCaliber 3574 shown\*

## THE CHOICE FOR LANDSCAPING PROS.

Commercial customers across the U.S. have come to depend on the **XCaliber** for its legendary performance. Dixie Chopper's flagship mower features:

- **Pure Power** – Models powered with Kawasaki® FX, Vanguard®, or a fuel efficient Kohler® EFI.
- **New 60" X2 Wind Tunnel Deck** – The industry's best cutting deck design is now available in a popular 60" deck width and retains the X2's Wind Tunnel deck and industry leading 2 inch blade overlap.
- **Springer Forks** – Provide ultimate strength and comfort, making the XCaliber one of the smoothest riding industrial mowers on the market today.
- **Productivity** – The 2015 XCaliber features a new drivetrain configuration to increase ground speed up to 13 mph and mow over 6 acres per hour.
- **Most Lifetime Warranties** – Frame, stainless steel, front forks, steering levers, and front caster bearings.

\*Actual production model may vary

**Total Comfort** – Suspension seat and springer forks for best quality ride.**2x 7 Gallon Fuel Tanks** – Eliminate frequent fill-ups with more fuel capacity.**Pumps & Wheel Motors** – Stronger transmissions for extended system life.**Heavy-Duty Spindles & Cooling Fans** – Keep spindles and belts cool.**X2 "Wind Tunnel" Deck** – Increases airflow and reduces build-up inside deck

**5 YEAR**  
BUMPER-TO-BUMPER  
WARRANTY\*

\*up to 600 hour limited warranty



# XCALIBER

	60" Deck		66" Deck	74" Deck		
Model	3160	3360 EFI	3566	3574	3574 EFI	3674
<b>Engine</b>						
Manufacturer	Kawasaki® FX	Kohler® EFI	Kawasaki® FX		Kohler® EFI	Vanguard®
Horsepower	31	33	35			36
Displacement	999cc	824cc	999cc			993cc
Air-cleaner	2 stage					
Cooling	Air cooled					
Starter	Electric					
Engine warranty	3 Year					

<b>Drive System</b>						
Pumps	Hydro-Gear® 21cc					
Wheel motors	Parker® DG335					
Ground speed	13 mph					
Parking brake	Automotive Style					
Towing capacity	2000 lbs					

<b>Mower Deck</b>						
Deck size	60"		66"	74"		
Acres/hour	5.2		5.4	6.5		
Cutting height	1.5" - 5"					
OCDC (operator controlled discharge chute)	Standard					
Deck height adjustments	Manual lift, 1/4" increments					
Electric lift	-					
Deck engagement	Ogura® 250 ft-lbs					
Construction	7 ga formed & welded					
Top plate	7 ga bolted (not welded)					
Blades	3 - 21.375" x 2.5"		3 - 23.3" x 2.5"	3 - 26" x 2.5"		
Blade tip speed (approximate)	19,031 Fpm			19,144 Fpm		
Spindle housings	1 pc keyless sealed cast iron					
Spindles	1.25" effective diameter machined shaft					
Anti-scalp rollers	6					
Spindle cooling fans	3					
Pulleys	Vented split 3/16" steel deep groove					

<b>General</b>						
Battery	12 Volt, 475cca					
Digital display	Tachometer, voltmeter, service alerts					
Fuel capacity	14 gallons					
Rear tires	25 x 12-12 Grass Master					
Front tires	15 x 6-8					
Frame	Welded 1 x 2 tube, 7 ga formed					
Fenders	Stainless steel					
Floor-pan	Flip-up, steel					
Seat	Suspension seat w/ armrest					
Springer forks	Standard					

<b>Dimensions</b>						
Overall height	52"			51"		
Overall height (rollbar up)	77"			78"		
Overall width	65"		72"	76"		
Overall length	84"			86"		
Overall length (rollbar down)	101"			102"		
Weight	1390 lbs		1445 lbs	1482 lbs		

**DIXIE CHOPPER®**  
The World's Fastest Lawn Mower.®

6302 E County Road 100 N | Coatesville, IN 46121-9689 | Phone 765.246.7737 | Fax 765.246.6011 | www.dixiechopper.com

Specifications may change as we continuously improve our products. For the latest information and mower specifications, please visit dixiechopper.com or your local Dixie Chopper dealer. Engine horsepower information is provided by the engine manufacturer to be used for comparison only. ©2014 Dixie Chopper. All rights reserved. A division of Jacobsen, A Textron Company.