

DIXIE CHOPPER®

SILVER EAGLE

MODELS:**2550** 25hp, 50" Deck**2760KW** 27hp, 60" Deck**2760 EFI** 27hp, 60" Deck

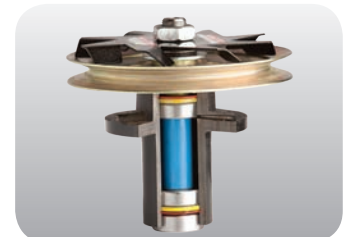
Silver Eagle 2760KW shown*

THE MOST TRIED AND TRUE ZERO-TURN IN THE INDUSTRY.

The **Silver Eagle** was originally conceived as a residential mower, yet proved to withstand rigorous commercial use. Today, the Silver Eagle continues to deliver the same value and performance since its debut over 10 years ago.

- **High Horsepower** – Choose from 25 or 27 horsepower Kawasaki® FX engine or a fuel efficient 27 horsepower Kohler® EFI engine to power you up to 5.3 acres per hour.
- **Elite X Cutting System** – Offered in two cutting widths (50" and 60"), Elite X decks easily tackle large volumes of grass and provide a more attractive after-cut appearance.
- **Mulching Effect** – Add a Twist blade to the existing X-Blade to boost mulching performance.
- **Proven Drivetrain** – Hydro-Gear® pumps and Parker® wheel motors provide smooth and reliable steering.
- **Unique Deck Spindle Package** – Our standard commercial spindle with an added cooling fan that reduces the operating temperature of the belt and spindle while keeping the top-side of the deck clean.

*Actual production model may vary

**High Performance Package** – Comes standard on KW and EFI models.**OCDC** – Open and close the discharge chute on command.**Pumps & Wheel Motors** – Stronger transmissions for extended system life.**Heavy-Duty Spindles & Cooling Fans** – Keep spindles and belts cool.**50" and 60" Elite X Deck** – Cuts all grass types cleanly in any situation.

5 YEAR
BUMPER-TO-BUMPER
WARRANTY*

*up to 600 hour limited warranty



SILVER EAGLE

	50" Deck		60" Deck	
Model	2550		2760KW	2760 EFI
Engine				
Manufacturer	Kawasaki® FX		Kawasaki® FX	Kohler® EFI
Horsepower	25		27	
Displacement	852cc			824cc
Air-cleaner	2 stage			
Cooling	Air cooled			
Starter	Electric			
Engine warranty	3 Year			
Drive System				
Pumps	Hydro-Gear® 12cc			
Wheel motors	Parker® DG240			
Ground speed	12 mph			
Parking brake	Automotive Style			
Towing capacity	500 lbs			
Mower Deck				
Deck size	50"		60"	
Acres/hour	4		5.3	
Cutting height	1.5" - 5"			
OCD (operator controlled discharge chute)	Standard			
Deck height adjustments	Manual lift, 1/4" increments			
Electric lift	Optional			
Deck engagement	Ogura® 250 ft-lbs			
Construction	10 ga formed & welded			
Top plate	7 ga bolted (not welded)			
Blades	3 - 17" x 2.5"		3 - 20.5" x 2.5"	
Blade tip speed (approximate)	17,875 fpm		17,399 fpm	
Spindles	1.25" effective diameter machined shaft			
Spindle housings	1pc keyless sealed cast iron			
Spindle cooling fans	1		3	
Anti-scalp rollers	4			
Pulleys	Vented split 3/16" steel deep groove			
General				
Battery	12 Volt, 300cca			
Digital display	Tachometer, voltmeter, service alerts			
Fuel capacity	8 gallons			
Rear tires	24 x 12-12 Grass Master			
Front tires	13 x 6.5-6			
Frame	Welded 2 x 2 tube, 7 ga formed			
Fenders	Stainless steel			
Floor-pan	Flip-up, steel			
Seat	Standard seat w/ armrest		Suspension seat w/ armrest	
Springer forks	Optional		Standard	
Dimensions				
Overall height	48"			
Overall height (rollbar up)	73"			
Overall width	54"		65"	
Overall length	74"			
Overall length (rollbar down)	94"			
Weight	1104 lbs		1215 lbs	

DIXIE CHOPPER®
The World's Fastest Lawn Mower.™

6302 E County Road 100 N | Coatesville, IN 46121-9689 | Phone 765.246.7737 | Fax 765.246.6011 | www.dixiechopper.com

Specifications may change as we continuously improve our products. For the latest information and mower specifications, please visit dixiechopper.com or your local Dixie Chopper dealer. Engine horsepower information is provided by the engine manufacturer to be used for comparison only. ©2014 Dixie Chopper. All rights reserved. A division of Jacobsen, A Textron Company.